



Bluebonnet

Bluebonnet Electric Cooperative

155 Electric Avenue

Bastrop TX 78602

800-842-7708

phillip.ellis@bluebonnet.coop

Date Issued:

March 9, 2020

2021 Shadow Glen T-2 Addition Engineering

SEALED BIDS TO BE SUBMITTED BY:

Friday, April 17, 2020 at 2:00 pm CST

Notice to Bidders

- **Sealed** bids addressed to Bluebonnet Electric Cooperative, **Phillip Ellis, 3186 E. Austin St, Giddings TX 78942 will be received until 2:00 p.m. CST, Friday, April 17, 2020** (Company Name and Address must be located on the outside of envelope/package). Any bid received after the above closing time will not be accepted and will be returned to the bidder upon request of the bidder.

Bid Tabulations will be available upon request.

- Engineering services to be performed in the months from January to April with prints available for contractor in May, 2021.
- Incomplete bid forms will invalidate the bid and the bid will be rejected and returned to the bidder upon request. Any and all exceptions taken to the bid by the bidder shall be listed on the “Exceptions List” when the bid is submitted. The right to accept any bid or to reject any or all bids and to waive all formalities is hereby reserved by Bluebonnet Electric Cooperative.
- Bidder will be responsible for providing a detail description of services that will be provided, an itemized pricing list for the services offered and information needed from BBEC to perform the services.

Sealed Bids sent to:

Bluebonnet Electric Coop

2021 Shadow Glen T-2 addition Engineering

Attn: Phillip Ellis

3186 East Austin St

Giddings, TX 78942

or via email to

phillip.ellis@bluebonnet.coop

Deadline: 2:00 p.m. CST, Friday, April 17, 2020

Engineering Firm Scope of Work

- Provide services for the installation of a second transformer, circuit switcher and overcurrent protection panel at this station and provide transformer protection settings for the 33 MVA unit.
- Provide engineering services that will develop Relay and Control drawings of PWT R&C connections in the new transformer control cabinet, circuit switcher and overcurrent protection panel to ensure proper operation of the unit.
- Provide engineering services to review BBEC footing specifications to determine if specifications suffice for construction at this particular station to facilitate the installation of steel to build a new five (5) bay A-frame with one (1) Total bay and one (1) feeder bays, one (1) PT/MTU bay, three (3) URD exit, one (1) transfer bus tie switch and one (1) operating bus tie switch, station service and meter reading equipment. *(if bidder requires a geotechnical soil bore bidder shall state so in their bid)*
- Provide engineering services to update initial and ultimate one-line drawings to reflect the additions from the scope of the project.
- Provide engineering services to design conduit routes for relay and control cables to power transformer pad, circuit switcher, A-frame for low side breaker control, station service, potential transformer, yard lights and update cable and conduit layout and cable schedule prints.
- Provide engineering services to update control house layout plan to show the addition of three (3) new feeder breaker and overcurrent protection panel.
- Update all substation drawings to reflect the new construction and/or retirement of the scope of the project.
- Provide engineering services to review BBEC construction units and create a detailed accurate bill of materials (steel, concrete, electrical equipment and cable/s) for the transformer addition and A-frame expansion. Shall include quantities and manufacturer part numbers in a Microsoft Excel sheet.
- Provide AutoCad 2015 (or newer version) and PDF drawing of R&C, structural and electrical drawings for bid and construction (Issued for Bid and Issued for Construction) ***(all prints shall be labeled by the name of the print and the date the print was created)***
- Provide as-built prints at the completion of the project in AutoCad 2015 (or newer version) and PDF. ***(all prints shall be labeled by the name of the print and the date the print was created)***

BBEC SCOPE OF WORK

- Provide the R&C, Electrical and Structural drawings for the Shadow Glen substation.
- Provide BBEC construction drawings for review and bill of material creation.
- Provide all necessary drawings requested by engineering firm that is awarded the project; within reason that is applicable to the project scope.
- Allow reasonable access to the substation for the firm if needed to perform services as requested.
- Initiate pre-design and progress meetings with the firm that is awarded the project.
- Submit red-line markup of prints after construction for the engineering firm to perform as-built requirements.

GENERAL INSTRUCTIONS FOR BIDDING TO BLUEBONNET ELECTRIC COOPERATIVE

REQUEST FOR BIDS-TERMS AND CONDITIONS

Instructions

The following instructions apply to all bids and become a part of the terms and conditions of any bid submitted, unless bidder takes exception in writing when submitting bid.

Form

Bid must be submitted on this form only, in single copy, unless otherwise stated.

BIDDER MUST RETURN THE ENTIRE ORIGINAL BID DOCUMENT WITH BID.

Bid Return

Bid must be received, and to ensure proper recognition upon arrival, list the Bidding Company Name, Address and Bid Number on the outside of your envelope.

Authorized Signature

Bids must show full firm name and mailing address of bidder and be manually signed by an authorized sales or quotation representative of the bidder. Firm name and authorized signature should appear on each page of bid where spaces are provided. Submission of a signed bid will be interpreted to mean that bidder has hereby agreed to all terms and conditions set forth in all of the sheets which make up this invitation.

Late Bids

Bids must be received at the location indicated in the bidding documents and received prior to the time indicated on this form. Late bids will not be opened and will be returned to the bidder upon written request.

Withdrawal-Alteration of Bids

Bids cannot be altered after receiving time or opening time. No bid may be withdrawn after opening time without acceptable reason in writing and with the approval of Bluebonnet Electric Cooperative.

Firm Prices

Bid prices must be firm for a minimum of 90 days from the date of bid opening.

Best Value

All bidders are hereby notified that Bluebonnet Electric Cooperative shall consider all factors it believes to be relevant in selecting the offer that provides the best value, including, but not limited to, the purchase price, the proximity of the bidder as it relates to his ability to perform the contract for Bluebonnet Electric, the delivery date, the reputation of the bidder and the bidder's goods or services, the quality of the bidder's goods or services, and the bidder's past performance under contracts with Bluebonnet Electric.

Right to Reject Bids

Bluebonnet Electric Cooperative reserves the right to accept or reject any or all bids, to waive any informalities and technicalities, to accept the offer considered most advantageous in order to obtain the best value for Bluebonnet Electric Cooperative. Causes for rejection of a bid may include, but shall not be limited to, the bidder's current inability to satisfactorily perform the work or service, or the bidder's previous failure to properly and timely perform its obligations under a contract with Bluebonnet Electric Cooperative. Bidders may be disqualified and rejection of proposals may be recommended for any (but not limited to) of the following causes: 1) Failure to use the proposal form furnished by Bluebonnet Electric Cooperative; 2) Lack of signature by an authorized representative on the proposal form; 3) Failure to properly complete the proposal; 4) Evidence of collusion among bidders; or 5) Unauthorized alteration of bid form. Bluebonnet Electric Cooperative reserves the right to waive any minor informality or irregularity.

No Bids

If bidder is unable to quote, the bid form should be returned to the purchasing agent before opening time, and reason given for not bidding if bidder desires to bid on future purchases.

Award of Contract

The bid award may be based on, but not necessarily limited to, the following factors:

- a. The purchase price, including payment discount terms;
- b. The reputation of the bidder and of the bidder's goods or services;
- c. The quality of the bidder's goods or services;
- d. The extent to which the goods or services meet Bluebonnet Electric's needs;
- e. The bidder's past relationship with Bluebonnet;
- f. The total long-term cost to Bluebonnet Electric to acquire the bidder's goods or services;
and
- g. Any relevant criteria specifically listed in this request for bid.

Bluebonnet Electric prefers to award the entire contract to a single Contractor; although, Bluebonnet Electric reserves the right to award multiple contracts to secure the best value for Bluebonnet Electric.

Payment of Invoices

Invoices must be scanned and submitted by the successful bidder to Brian Mitschke, Superintendent of Technical Services, brian.mitschke@bluebonnet.coop.

1. The determination of quantities of work acceptably completed under the terms of the contract, or as directed by the Bluebonnet Electric in writing, will be made by the inspector or subcontractor assigned by Bluebonnet Electric.
2. The payment of any current or partial estimate prior to final acceptance of the work by the Owner shall in no way constitute an acknowledgment of the acceptance of the work, nor in any way prejudice or affect the obligation of the Contractor to repair, correct, or replace, at his own expense, any defects, imperfections, or damages resulting from defects or imperfections in the construction. The Project Manager shall be the sole judge of such defects, imperfections, or damage.

Any item of work not covered in the proposal will not be paid for directly, but shall be considered as subsidiary to a regular bid item.

3. Retainage

As security for the faithful and satisfactory completion of the work by the Contractor, Bluebonnet Electric Cooperative may retain up to 5 percent of the total dollar amount of work completed on all contracts until acceptance by Bluebonnet Electric Cooperative.

4. Final Acceptance

After Contractor has completed the Work, Contractor shall notify Bluebonnet and request a final inspection of the Work or a sample thereof. Bluebonnet shall inspect or cause to be inspected all or a portion of the Work, and prepare and deliver to Contractor an itemized list of all Work, if any, which is found to be unacceptable.

5. Final Payment

Whenever the improvements provided for by the contract shall have been completely performed on the part of the Contractor as evidenced by the inspector, the contractor will provide a final invoice. All prior estimates upon which payments have been made are subject to necessary corrections or revisions in the final payment. The amount of this final invoice less any sums previously paid under the provisions of the contract, will be paid the Contractor within thirty (30) days after final acceptance provided the Contractor has furnished Bluebonnet Electric satisfactory evidence that all sum of money due for any labor, materials, apparatus, fixtures, or machinery furnished for and used in the prosecution of the work, or that the person or persons to whom the same may respectively be due have consented to such final payment.

Safety Data Sheets

SDS's must be provided prior to or with receipt of order, and when revised. Containers must be properly labeled and identified in accordance with the OSHA Hazard Communication Standard. Improperly labeled containers will result in refusal of the shipment and possible change in vendors.

Addenda

In the event of a needed change in the published bid documents, it is understood that all the foregoing terms and conditions and all performance requirements will apply to any published addendum.

All published addenda shall be signed and included with the response package as acknowledgement of the addendum. Bidders are responsible for obtaining all published addenda from Bluebonnet Electric Cooperative. Bluebonnet Electric Cooperative assumes no responsibility for the Bidders failure to obtain or properly submit any addendum. Failure to acknowledge and submit any addendum may be cause for the bid to be rejected. Bluebonnet Electric's decision to accept or reject any particular bid due to a failure to acknowledge and submit addenda shall be final.

Examination of Site

Bidders are required, prior to submitting any proposal, to read the specifications carefully, to visit the site of the work, to examine carefully local conditions, to inform themselves by their independent research, test and investigations of the difficulties to be encountered and judge for themselves of the accessibility of the work and all attending circumstances affecting the cost of doing the work or time required for its completion and obtain all information required to make an intelligent proposal. No information given by Bluebonnet Electric other than that contained in the specifications shall be binding upon Bluebonnet Electric. Bidders shall rely exclusively upon their own estimates, investigations, tests and other data which are necessary for full and complete information upon which the proposal may be based. It is mutually agreed that submission of a proposal is evidence that the bidder has made the examination, investigations and test required herein.

Bluebonnet Electric Cooperative

Certification of Bid

Re: **2021 Shadow Glen T-2 addition Engineering**

I, the undersigned, hereby certify and represent that I am duly authorized to submit this bid on behalf of the firm identified herein and that this firm hereby agrees to be bound by and is willing, capable and does qualify to comply with all the provisions specified herein for completion of the services requested at the terms and conditions as quoted.

Representative's Name:

(Please print or type)

Representative's Signature:

Representative's Title:

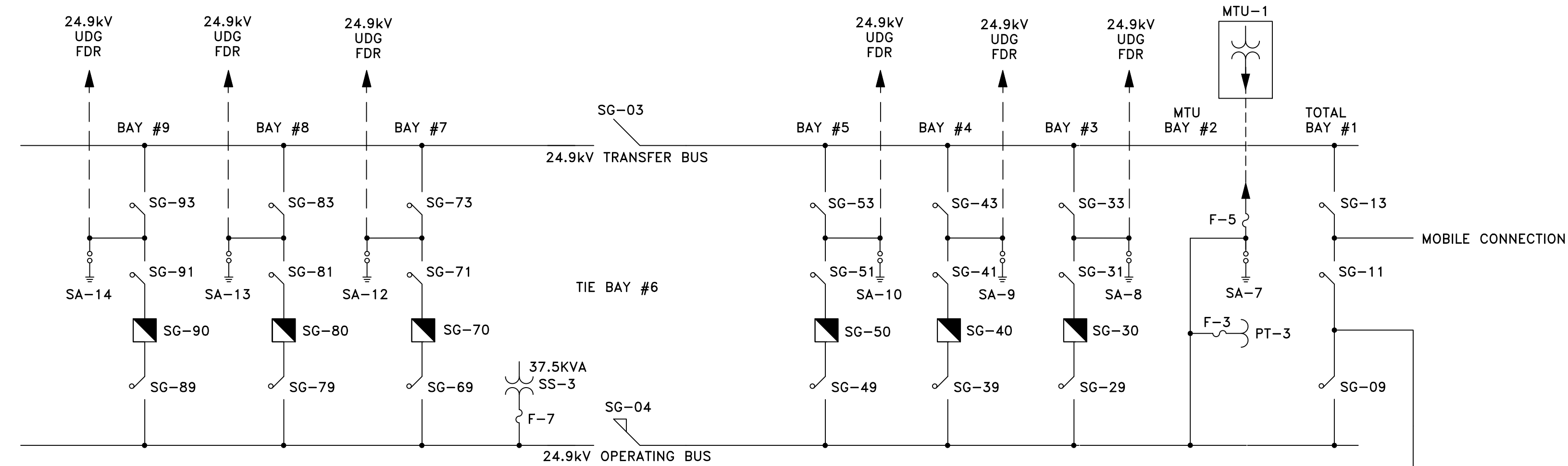
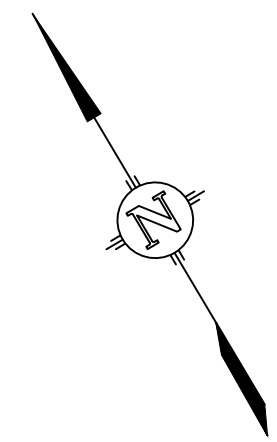
Date: _____

Bidding Firm Name and Address:

Phone Number: _____

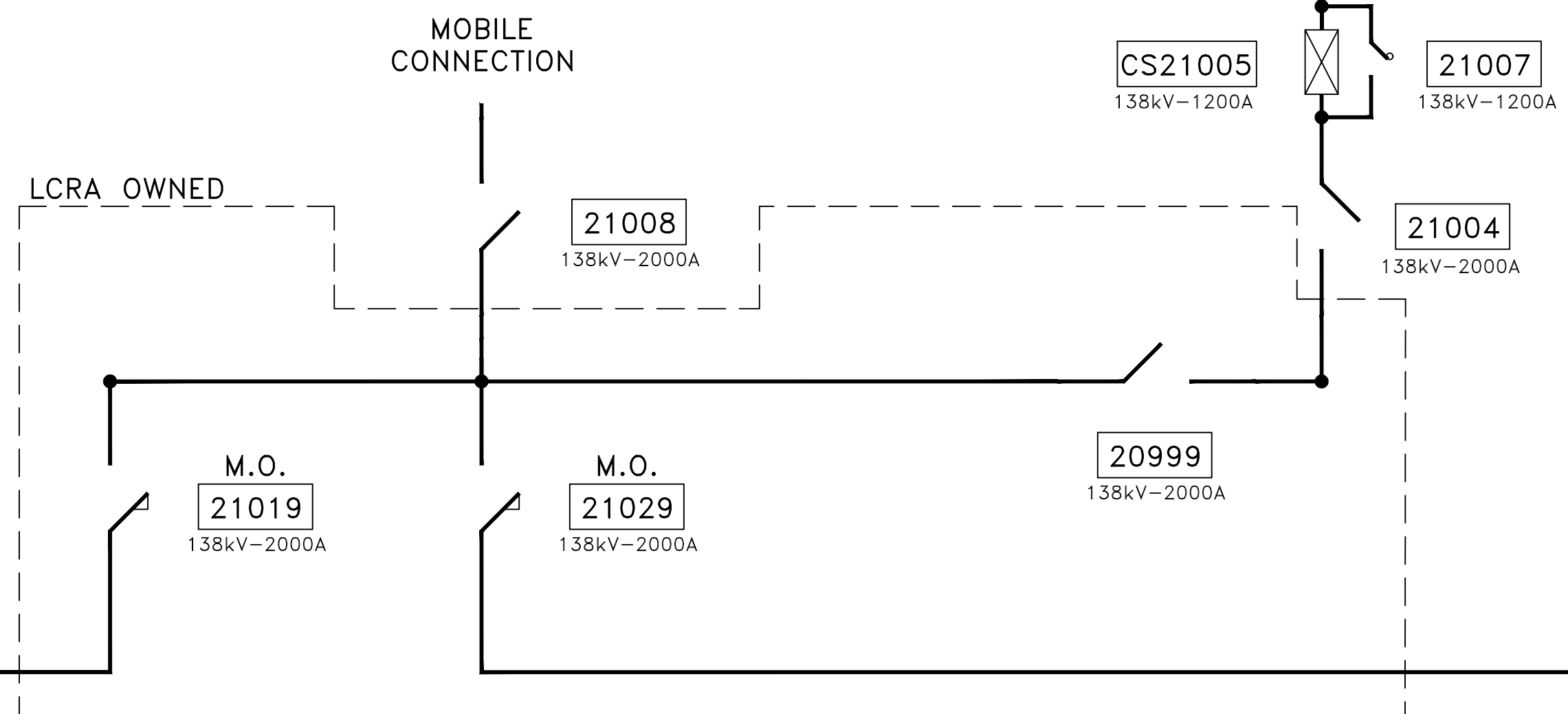
Fax Number: _____

Email Address: _____



T-146
138kV TO
HARRIS BRANCH
(S444)

T-146
138kV TO
MANOR
(S159)



LEGEND - ONE-LINE

- | | | | |
|--|--|--|--|
| | OIL or GAS CIRCUIT BREAKER | | CURRENT XFMR. (EXT.) |
| | OIL CIRCUIT RECLOSER | | CURRENT XFMR. (INT.) |
| | OIL SWITCH | | POTENTIAL XFMR. |
| | REGULATOR | | COUPLING CAPACITOR VOLTAGE XFMR (CCVT) |
| | CIRCUIT SWITCHER W/BLADE | | CAPACITOR |
| | CIRCUIT SWITCHER W/O BLADE | | WAVE TRAP |
| | AIR BREAK SWITCH (TPST) | | SURGE ARRESTER |
| | HOOKSTICK DISC. (SPST) | | POWER XFMR. |
| | AIR BREAK SWITCH W/ INTERRUPTER WHIP | | AUTO XFMR. |
| | AIR BREAK SWITCH W/ VACUUM INTERRUPTER | | STATION SERVICE XFMR. |
| | VEE SWITCH | | (MTU) MODULATION TRANSFORMER UNIT |
| | CENTER BREAK SWITCH | | OMU |
| | DOUBLE SIDE BREAK SWITCH | | LM |
| | POWER FUSE DISC. | | UNDERGROUND EXITS |
| | FUSE or FUSE CUTOUT | | METERING UNIT |
| | CURRENT LIMITING FUSE | | |

REF: PROJECT COVER SHT S376-E-5

C					F					DWN. BY: TLR/MLP	
B					E					CHKD BY:	
A					D					APPRVD BY:	
Ltr.	Date	Revision	By	Chkd.	Appd.	Ltr.	Date	Revision	By	Chkd.	Appd.

RELEASED FOR INFORMATION ONLY BY
JAVIER A. SANCHEZ, P.E.#96454
ON
4/20/09
AND SHALL NOT BE USED FOR
PERMIT, PROCUREMENT OR
CONSTRUCTION PURPOSES

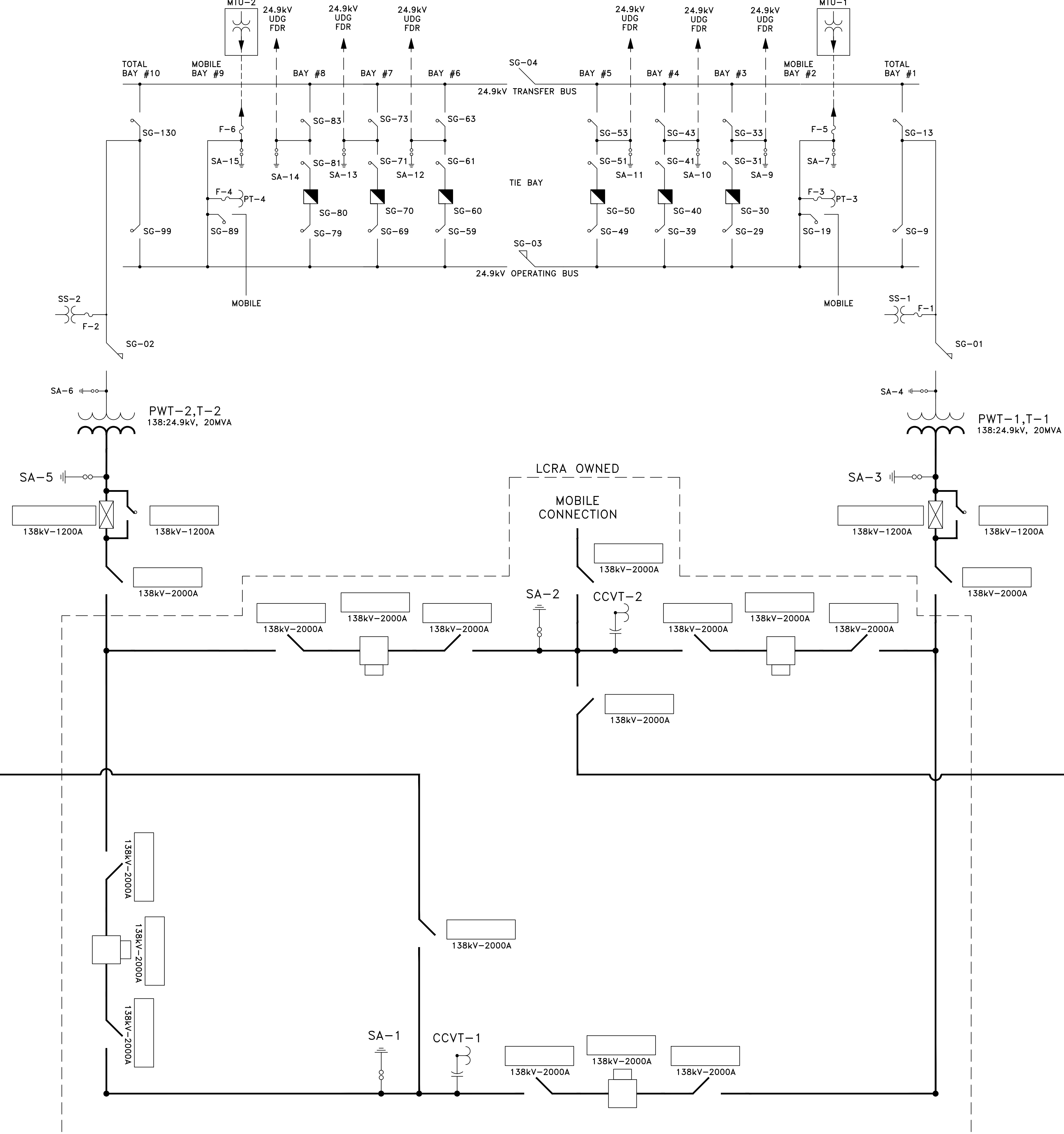


BLUEBONNET ELECTRIC COOPERATIVE
GIDDINGS, TEXAS
LOCATION
SHADOW GLEN SUBSTATION

INITIAL ONE-LINE
DWG. NO.
S592-E-1

T-146
138kV TO
HARRIS BRANCH
(S444)

T-146
138kV TO
MANOR
(S159)



LEGEND - ONE-LINE

- OIL or GAS CIRCUIT BREAKER
- OIL CIRCUIT RECLOSER
- OIL SWITCH
- REGULATOR
- CIRCUIT SWITCHER W/BLADE
- CIRCUIT SWITCHER W/O BLADE
- AIR BREAK SWITCH (TPST)
- HOOKSTICK DISC. (SPST)
- AIR BREAK SWITCH W/ INTERRUPTER WHIP
- AIR BREAK SWITCH W/ VACUUM INTERRUPTER
- VEE SWITCH
- CENTER BREAK SWITCH
- DOUBLE SIDE BREAK SWITCH
- POWER FUSE DISC.
- FUSE or FUSE CUTOUT
- CURRENT LIMITING FUSE
- CURRENT XFMR. (EXT.)
- CURRENT XFMR. (INT.)
- POTENTIAL XFMR.
- COUPLING CAPACITOR VOLTAGE XFMR (CCVT)
- CAPACITOR
- WAVE TRAP
- SURGE ARRESTER
- POWER XFMR.
- AUTO XFMR.
- STATION SERVICE XFMR.
- (MTU) MODULATION TRANSFORMER UNIT
- OMU OUTBOUND MODULATION UNIT
- LM LOAD MANAGEMENT
- UNDERGROUND EXITS
- METERING UNIT

REF: PROJECT COVER SHT Sxxx-E-

Ltr.	Date	Revision	By	Chkd.	Appd.	Ltr.	Date	Revision	By	Chkd.	Appd.
C						F					
B						E					
A						D					

DWN. BY: TLR
 CHKD BY:
 APPRVD BY:

RELEASED FOR INFORMATION ONLY BY
 FELIX E. ERALES, P.E. #94758
 ON 05/15/2007
 AND SHALL NOT BE USED FOR
 PERMIT, PROCUREMENT OR
 CONSTRUCTION PURPOSES



BLUEBONNET ELECTRIC COOPERATIVE
 GIDDINGS, TEXAS
 LOCATION
 SHADOW GLEN SUBSTATION

ULTIMATE ONE-LINE

DATE 05/07
 SCALE N.T.S.
 DWG. N
 S592-