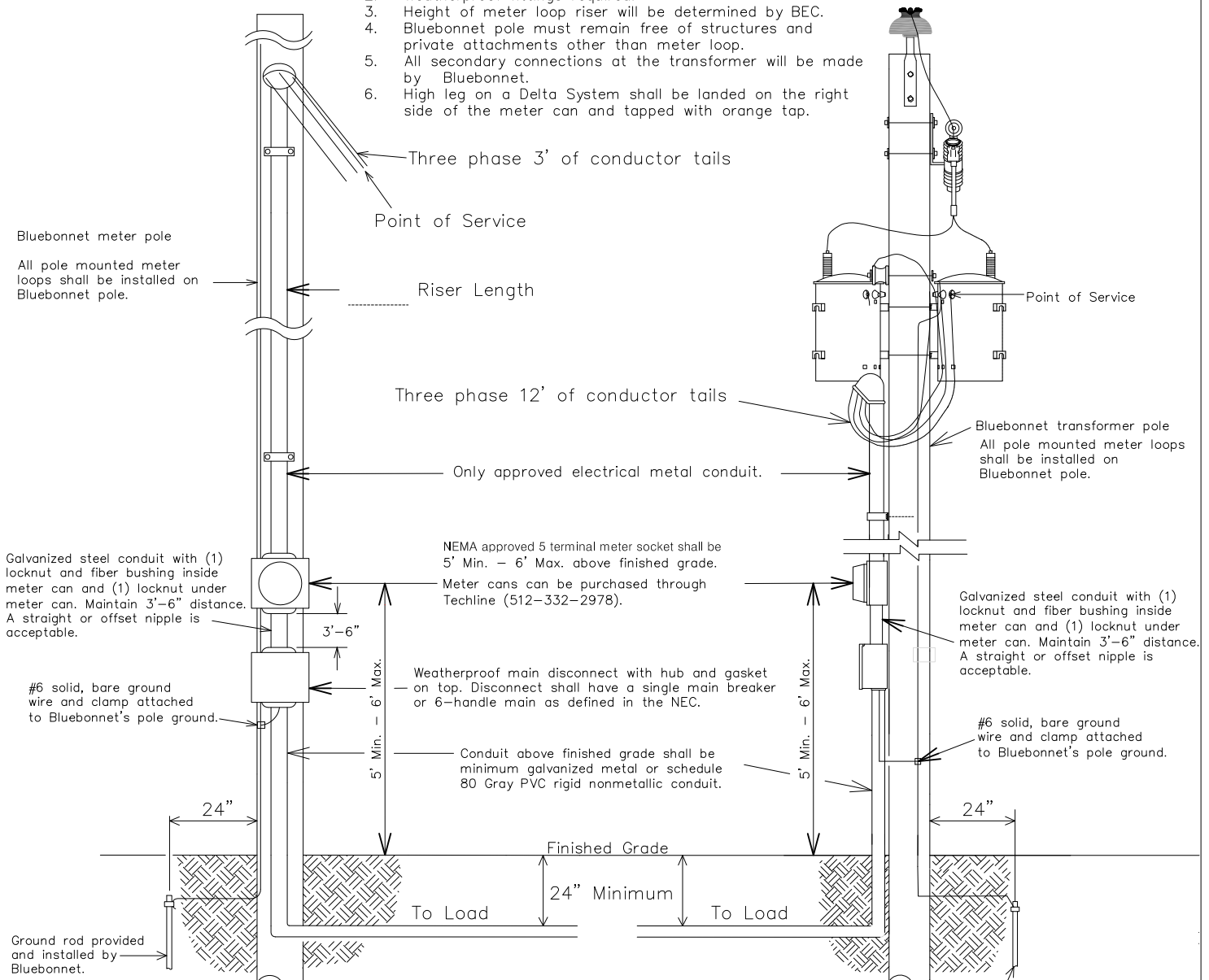


Notes:

1. A Bond wire shall be used, see NEC Table 250.66 for Bond Wire sizing.
2. Weatherproof fittings required.
3. Height of meter loop riser will be determined by BEC.
4. Bluebonnet pole must remain free of structures and private attachments other than meter loop.
5. All secondary connections at the transformer will be made by Bluebonnet.
6. High leg on a Delta System shall be landed on the right side of the meter can and tapped with orange tap.



*** WIRING INSTALLATIONS MUST MEET LOCAL GUIDELINES, IF APPLICABLE, SET FORTH BY CITY, COUNTY, OR OTHER GOVERNING ENTITY IN THE EVENT THESE REQUIREMENTS ARE MORE STRINGENT THAN BLUEBONNET SPECIFICATIONS. ***

Latest update can be found at www.bluebonnetelectric.coop/myHome/electricServices/meterLoop.aspx

FOR THE MEMBER'S SAFETY, WIRING INSTALLATION AND MATERIAL SHALL CONFORM TO THE REQUIREMENTS OF THE NEC, TDLR AND NESC.

CURRENT CARRYING CAPACITIES AND CONDUIT SIZE REQUIREMENT OF STANDARD WIRE SIZE-(RHH, RHW, THW, THWN, THHN, AND XHHW THIS GUIDE REFERS TO TABLE 310.15 (B)(7), SINGLE PHASE DWELLINGS SERVICES.REFER TO NEC FOR OTHER CALCULATIONS.

COPPER CONDUCTOR			ALUMINUM CONDUCTOR		
WIRE SIZE	BREAKER SIZE	CONDUIT SIZE	WIRE SIZE	BREAKER SIZE	CONDUIT SIZE
#6	60 AMP	1¼" CONDUIT	#4	60 AMP	1¼" CONDUIT
#4	100 AMP	1½" CONDUIT	#2	100 AMP	1¼" CONDUIT
#2	125 AMP	1½" CONDUIT	#1/0	125 AMP	1½" CONDUIT
#1	150 AMP	2" CONDUIT	#2/0	150 AMP	2" CONDUIT
#2/0	200 AMP	2" CONDUIT	#4/0	200 AMP	2" CONDUIT

3Ø, STRAIGHT 480 VOLT
3W CORNER GROUND DELTA
60-200 AMP



DATE	REVISIONS	Drawn By : RG	Checked By : MS COMMITTEE	Approved By : TE
-	-	Scale : NONE	Date: 06-16-2016	MS-301A
-	-			