

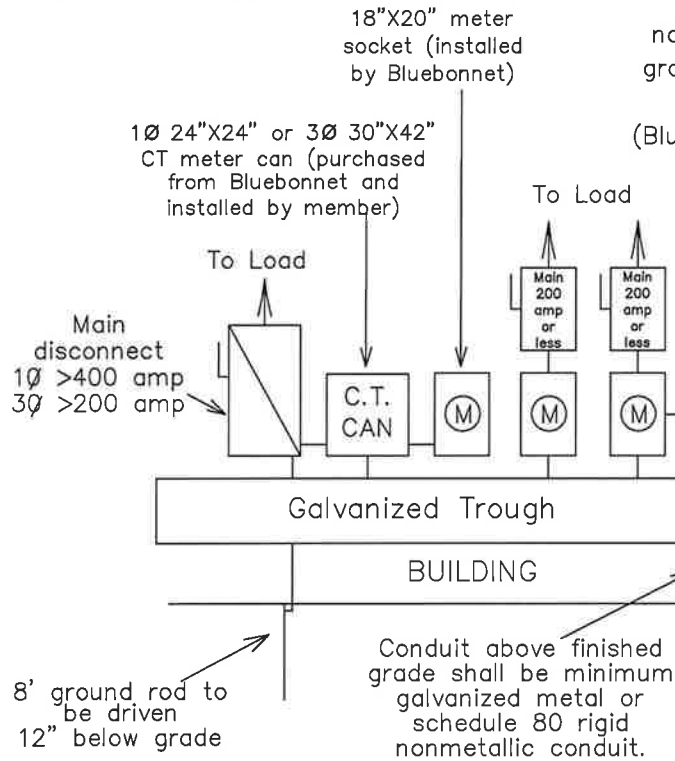
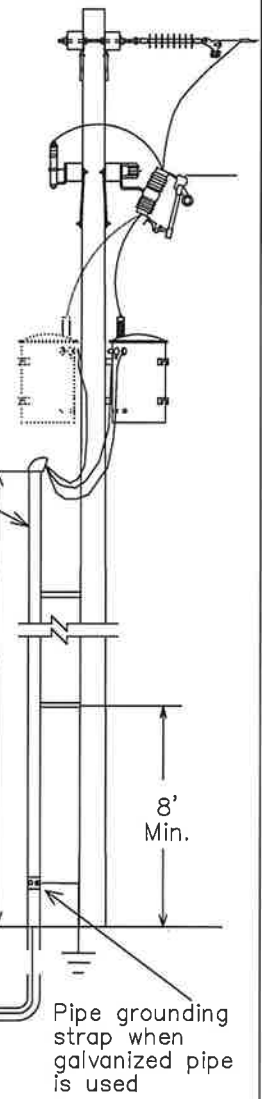
Notes:

1. Line taps shall be made in the galvanized wiring trough by the electrical contractor.
2. Weatherproof fittings Required.
3. (2) disconnects could be substituted with (1) fused disconnect.
4. No more than (2) risers or (2) conductors per phase shall be allowed.
5. Wire sized to total disconnect sizes.
6. Neutral(s) may be reduced no more than two sizes on residential application. No reduction of the neutral(s) is allowed on commercial application.
7. 4'-5' of conductor must be left in CT meter can for final connection.
8. More than (6) main disconnects require a properly sized main disconnect ahead of the galvanized trough.
9. Bluebonnet pole must remain free of structures and private attachments other than meter loop riser assembly.
10. Meter assembly must remain unenclosed on exterior of structure.

Ⓐ
Riser Length:
 35' Pole = 20' Riser
 40' Pole = 24' Riser

Stand-Off:
 Min. 9"
 Max. 12"

3" (or 2- 2") galvanized metal conduit or schedule 80 rigid nonmetallic conduit above finished grade. Riser w/stand-off brackets and 10' of conductor tails (Bluebonnet to mount risers to pole)



* **WIRING INSTALLATIONS MUST MEET LOCAL GUIDELINES, IF APPLICABLE, SET FORTH BY CITY, COUNTY, OR OTHER GOVERNING ENTITY IN THE EVENT THESE REQUIREMENTS ARE MORE STRINGENT THAN BLUEBONNET SPECIFICATIONS.** *

Conduit below finished grade shall be minimum schedule 40 rigid nonmetallic conduit.

Latest update can be found at www.bluebonnetelectric.coop/setup/meter.shtml

FOR THE MEMBER'S SAFETY, WIRING INSTALLATIONS SHALL CONFORM TO THE REQUIREMENTS OF THE NEC, TDLR AND NESC.

METER LOOP ASSEMBLY

1Ø >400 AMP OR 3Ø >200 AMP
 MULTIPLE METERING POINTS WITH
 CT METERING ON BUILDING.

Bluebonnet Electric Cooperative, Inc.
 P.O. Box 729
 Bastrop, Texas 78602

DATE	REVISIONS	Drawn By :	Checked By :	Approved By :
2-29-08	Reduced Neutral Size (See Note #6)	BS	SE	EK
11-20-09	Wiring installations local guidelines	Scale : NONE	Date : 11-20-09	MS-114